

# \$1,099,000 - 1910 Pineridge Drive, Invermere

MLS® #10350979

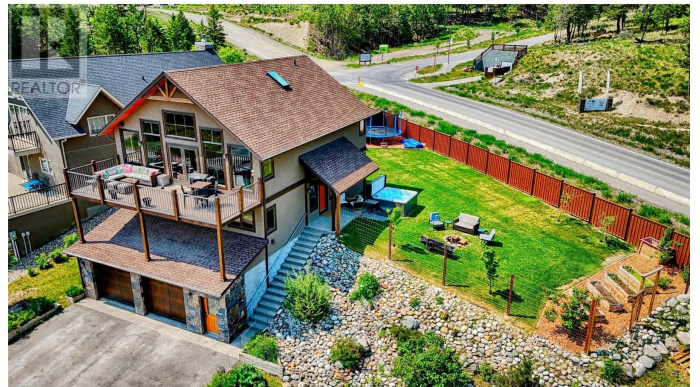
**\$1,099,000**

5 Bedroom, 3.00 Bathroom, 3,284 sqft

Single Family on 0.25 Acres

Invermere, Invermere, British Columbia

Where quality craftsmanship meets breathtaking views. This stunning 5-bedroom, 3-bathroom home sits in one of Invermere's most desirable neighbourhoods, offering privacy, comfort, and panoramic vistas of the Rocky Mountains and Columbia Valley from Radium to Fairmont, with glimpses of Lake Windermere. Thoughtfully designed with high-end finishes throughout, the home features maple hardwood flooring, vaulted alder ceilings with skylights, and large-format ceramic tile in the kitchen and baths. The gourmet kitchen includes stainless steel appliances and flows seamlessly into the open-concept top-floor living space, where oversized windows and an expansive deck invite you to soak in the spectacular scenery. The spacious primary suite is a true retreat, complete with a walk-in closet and a luxurious 5-piece ensuite featuring his and her sinks, jetted soaker tub, and large tiled shower. Downstairs, you'll find heated floors in both the finished basement and oversized double garage. Outdoors, enjoy a fully fenced backyard oasis with a hot tub, garden, greenhouse, and shed—perfect for entertaining, relaxing, or growing your own produce. The home is non-strata, giving you the freedom and flexibility to make it your own. Ideally located near biking trails, parks, pickleball courts, and schools, and just minutes to downtown Invermere, Kinsmen Beach, Panorama Mountain, and world-class golf. Experience the



perfect blend of luxury, comfort, and  
adventureâ€™right from your doorstep.  
(id:36535)

Built in 2011

**Essential Information**

Listing #	10350979
Price	\$1,099,000
Bedrooms	5
Bathrooms	3.00
Square Footage	3,284
Acres	0.25
Year Built	2011
Type	Single Family
Sub-Type	Freehold

**Community Information**

Address	1910 Pineridge Drive
Subdivision	Invermere
City	Invermere
State	British Columbia
Zip Code	V0A1K4

**Amenities**

Amenities	Golf Nearby, Airport, Park, Recreation, Schools, Shopping, Ski area
Features	Cul-de-sac, Corner Site, Irregular lot size, Central island, Jacuzzi bath-tub, One Balcony
Parking Spaces	23
Parking	Attached Garage
# of Garages	2
View	Lake view, Mountain view, Valley view, View (panoramic)

**Interior**

Appliances	Refrigerator, Dishwasher, Dryer, Range - Electric, Microwave, Washer
Heating	Electric, Geo Thermal In Floor Heating, Forced air
Cooling	Central air conditioning
Has Basement	Yes
Basement Type	Partial

# of Stories	3
--------------	---

## **Exterior**

Exterior	Stone, Stucco
Exterior Features	Landscaped
Roof Material	Asphalt shingle
Roof Style	Unknown
Foundation	Insulated Concrete Forms

## **Additional Information**

Zoning	Unknown
--------	---------

## **Listing Details**

Listing Office	Courtesy Of Jenna Minnaar Of RE/MAX Invermere
----------------	---

MLS®, REALTOR®, and the associated logos are trademarks of The Canadian Real Estate Association.