

\$124,900 - 2152 Westside Park View Lot# 20, Invermere

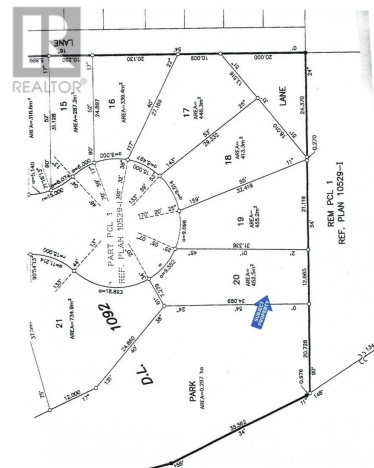
MLS® #10352836

\$124,900

0 Bedroom, 0.00 Bathroom,
Vacant Land on 0.11 Acres

Invermere, Invermere, British Columbia

This north-east-facing lot is located on a quiet cul-de-sac, offering a peaceful setting for your future home. The land slopes gently toward the road and comes with no building commitments, allowing you to choose your builder. Your building design plans must align with the neighbourhood's established character. The Westside Park community is a well-developed area featuring paved roads, municipal services at the lot line, a community garden, a children's park, and ample green space. Residents also enjoy access to the Legacy Trail, perfect for hiking and biking, and the proximity to local schools makes it ideal for families. Additionally, the adjacent lot (#19) is available for purchase, providing an excellent opportunity for expansion or investment. (id:36535)



Essential Information

Listing #	10352836
Price	\$124,900
Bathrooms	0.00
Acres	0.11
Type	Vacant Land
Sub-Type	Freehold

Community Information

Address	2152 Westside Park View Lot# 20
Subdivision	Invermere



City	Invermere
State	British Columbia
Zip Code	V0A1K4

Amenities

Utilities	Cable
-----------	-------

Additional Information

Zoning	Unknown
--------	---------

Listing Details

Listing Office	Courtesy Of Brenda Braund-Read Of Royal LePage Rockies West
----------------	---

MLS®, REALTOR®, and the associated logos are trademarks of The Canadian Real Estate Association.