

\$575,000 - 1000 9th Street Unit# 25, Invermere

MLS® #10354047

\$575,000

3 Bedroom, 3.00 Bathroom, 1,553 sqft

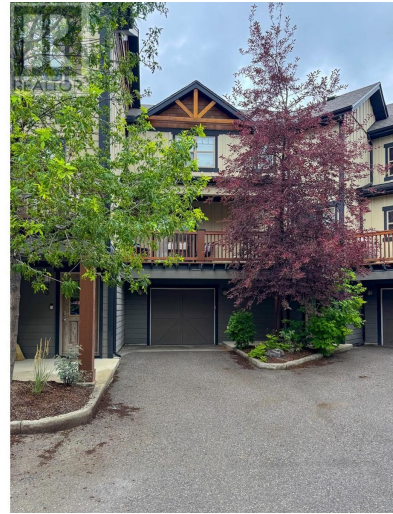
Single Family on 1.00 Acres

Purcell Point, Invermere, British Columbia

Bring your WOW face—this immaculate Purcell Point Townhome is a showstopper! It's the largest floorplan in the complex and features a rare spacious den perfect for a home office, gym, gear storage, or weekend overflow when friends accidentally invite themselves to the lake! Loaded with upgrades: all new appliances (except the stove), refinished solid oak flooring, new vinyl plank and carpeting, built-in dining cabinetry with a wine fridge (cheers!), new lighting, new paint, new window treatments, a new heat pump—and yes, even new toilets! The best part? It's being sold fully furnished with designer pieces chosen just for this space. That's right—this beauty is turn-key. Sign the contract and enjoy it from DAY ONE. Take in the views from 2 covered decks with 3 separate entrances, or head out on foot to explore everything this crazy-cool mountain town has to offer—including the beach! When adventure calls, you're just minutes from world-class golf, biking, hiking, skiing, hot springs, and more. Time to tell your friends that "your life is better than their vacation!" That's just how we LIVE here in the Columbia Valley! Ask your Realtor to send you a copy of the complete list of improvements on this stunner! (id:36535)

Built in 2007

Essential Information



Listing #	10354047
Price	\$575,000
Bedrooms	3
Bathrooms	3.00
Half Baths	1
Square Footage	1,553
Acres	1.00
Year Built	2007
Type	Single Family
Sub-Type	Strata
Style	Other

Community Information

Address	1000 9th Street Unit# 25
Subdivision	Purcell Point
City	Invermere
State	British Columbia
Zip Code	V0A1K0

Amenities

Features	Two Balconies
Parking Spaces	2
Parking	Attached Garage, See Remarks
# of Garages	1

Interior

Appliances	Range, Refrigerator, Dishwasher, Dryer, Water Heater - Electric, Microwave, Washer & Dryer
Heating	Electric Forced air, Heat Pump
Cooling	Heat Pump
Fireplace	Yes
Fireplace Fuel	Gas
Fireplace Type	Unknown
# of Stories	3

Exterior

Roof Material	Asphalt shingle
Roof Style	Unknown

Additional Information

Zoning Unknown

Listing Details

Listing Office Courtesy Of David McGrath Of Greater Property Group

MLS®, REALTOR®, and the associated logos are trademarks of The Canadian Real Estate Association.