

# \$1,280,000 - 885 Copperview Close, Windermere

MLS® #10361291

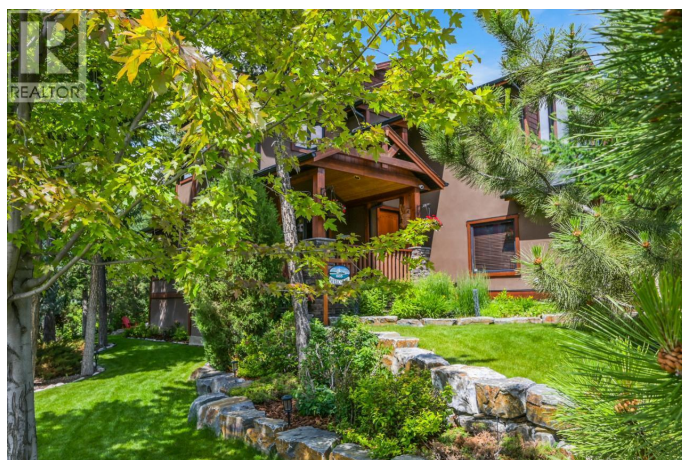
**\$1,280,000**

4 Bedroom, 4.00 Bathroom, 3,548 sqft

Single Family on 0.20 Acres

Windermere, Windermere, British Columbia

Proudly presenting a rare gem this year! a perfectly cared for 4 bedroom, 4 bath home in LAKEVIEW MEADOWS with over 3600SQFT of living space and true privacy, located in Copperview Close. From the welcoming front porch with views of the sun rising over Mt Swansea to the treed back yard, this family friendly home will not disappoint. Spacious layout perfect for entertaining or cozy quiet moments, with room for all. Beautifully crafted to stand the test of time in total year-round comfort with heated floors in all "stone" areas, central A/C, hardwood and slate flooring, granite countertops, stainless steel appliances, and solid wood doors and trims. The main floor includes the open kitchen with large island and a window-lined dining area, the living room anchored by a gas fireplace, an office, and a convenient mudroom/laundry. The upper level is a family retreat thanks to the light-filled bonus room with mountain views, the primary bedroom with a HUGE ensuite and walk-in closet, 2 additional bedrooms, and a full bath. The lower level offers heated floors, a 4th bedroom, full bathroom with steam shower, and a rec room with gas fireplace and full bar! Additional features include the heated garage, huge maintenance free deck with glass railings, and firepit area. Lakeview Meadows amenities include the rec centre with pool, walking paths, tennis courts, private beach, and playgrounds. THIS is your chance to be a part of one of the most sought-after neighbourhoods in the area! (id:36535)



Built in 2009

## Essential Information

Listing #	10361291
Price	\$1,280,000
Bedrooms	4
Bathrooms	4.00
Half Baths	1
Square Footage	3,548
Acres	0.20
Year Built	2009
Type	Single Family
Sub-Type	Freehold

## Community Information

Address	885 Copperview Close
Subdivision	Windermere
City	Windermere
State	British Columbia
Zip Code	V0A1K3

## Amenities

Amenities	Golf Nearby, Airport, Park, Recreation, Shopping, Ski area, Clubhouse, Party Room, Recreation Centre, Whirlpool, Racquet Courts
Features	Level lot, Treed, Central island
Parking Spaces	2
Parking	Attached Garage
# of Garages	2
View	Mountain view, View (panoramic)
Has Pool	Yes
Pool	Indoor pool, Outdoor pool

## Interior

Appliances	Refrigerator, Dishwasher, Dryer, Range - Gas, Microwave, Washer
Heating	Forced air
Cooling	Central air conditioning
Has Basement	Yes
Basement Type	Full
Fireplace	Yes

Fireplace Fuel	Gas
Fireplace Type	Unknown
# of Stories	3

### **Exterior**

Exterior	Other
Exterior Features	Landscaped, Level, Underground sprinkler
Roof Material	Asphalt shingle
Roof Style	Unknown
Foundation	Preserved Wood

### **Additional Information**

Zoning	Unknown
--------	---------

### **Listing Details**

Listing Office	Courtesy Of Kevin Thygesen Of RE/MAX Invermere
----------------	--

MLS®, REALTOR®, and the associated logos are trademarks of The Canadian Real Estate Association.