

# \$76,900 - 2049 Summit Drive Unit# 214, Panorama

MLS® #2478859

**\$76,900**

2 Bedroom, 2.00 Bathroom, 866 sqft

Single Family on 0.00 Acres

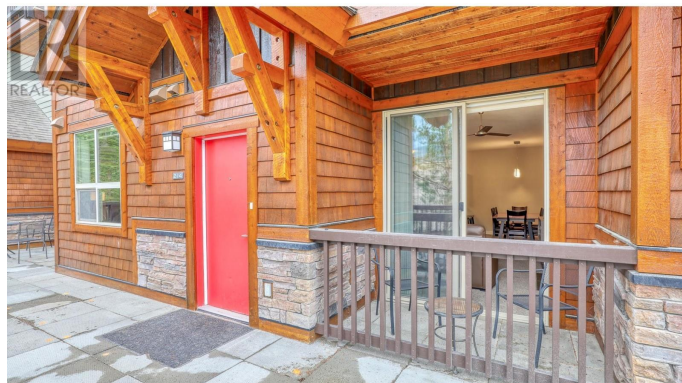
The Lookout, Panorama, British Columbia

Welcome to 214 B at The Lookout at Panorama Mountain Resort! This wonderful quarter share unit features 2 bedrooms, 2 bathrooms, gas fireplace, in-suite laundry, open floorplan and access to shared hottub and pool. Located in the upper village, only steps away from the chairlift, gondola, restaurants and more! Large patio with seating for 4 and another table for two in the enclosed patio. Nicely situated between units, keeping the unit cool with the Northern breeze. Enjoy 11-12 weeks a year without any of the maintenance of full ownership. Secure owners locker within the unit, heated underground parking with a ski locker and bike storage. Earn revenue while you not using the unit with the Panorama rental pool. Reach out today for more information or to book your showing! (id:36535)

Built in 2006

## Essential Information

Listing #	2478859
Price	\$76,900
Bedrooms	2
Bathrooms	2.00
Square Footage	866
Acres	0.00
Year Built	2006
Type	Single Family



Sub-Type                      Strata

### **Community Information**

Address                      2049 Summit Drive Unit# 214  
Subdivision                The Lookout  
City                            Panorama  
State                          British Columbia  
Zip Code                    V0A1T0

### **Amenities**

Amenities                    Golf Nearby, Park, Recreation, Shopping, Ski area, Clubhouse, Daycare, Racquet Courts  
Features                    Private setting  
Parking                      Parkade  
View                          Mountain view, View (panoramic)  
Has Pool                    Yes  
Pool                          Inground pool, Outdoor pool, Pool

### **Interior**

Appliances                 Range, Refrigerator, Dishwasher, Dryer, Microwave, Washer  
Heating                      Baseboard heaters  
Fireplace                    Yes  
Fireplace Fuel             Gas  
Fireplace Type             Unknown

### **Exterior**

Exterior                     Concrete, Stone, Other  
Exterior Features         Landscaped  
Roof Material              Asphalt shingle  
Roof Style                   Unknown

### **Additional Information**

Zoning                      Unknown

### **Listing Details**

Listing Office                Courtesy Of Alicia Balawyder Of RE/MAX Invermere

MLS®, REALTOR®, and the associated logos are trademarks of The Canadian Real Estate Association.